



MADE IN ITALY

WITH **HARVIN REFRIGERATED SLAVE MODULES**, YOU CAN INCREASE AND VARY YOUR SHOP'S OFFER, **MULTIPLYING SALES WITH HIGH-MARGIN PRODUCTS**.

THE NUMBER OF SELECTIONS AVAILABLE IS UP TO **320 DIFFERENT PRODUCTS**.

**DON'T WORRY, IT'S HARVIN WHO TAKES CARE OF IT!**



Harvin® is a brand of Lar Sistemi srl  
address via Industriale 14/16, 25082  
Botticino Sera BS  
tel 030 2190663 | fax 030 2693800  
info@harvin.eu | www.harvin.eu



FOLLOW US ON SOCIAL MEDIA



**MODULES**

**SLAVE  
REFRIGERATED**



IDEAL FOR:



TOBACCO SHOPS



PETROL STATIONS



PHARMACIES



HEMP SHOPS

MODULES SLAVE

HARVIN COMPLETES ITS PRODUCT RANGE WITH A SERIES OF REFRIGERATED SLAVE MODULES FOR THE SALE OF PRODUCTS WITH DIFFERENT PACKAGING. SNACKS, DRINKS, BAGS, SMALL JARS AND **HEMP PRODUCTS** CAN BE SOLD.

TOUCH SCREEN  
VENDING MACHINES  
+  
REFRIGERATED  
SLAVE MODULES  
=  
**SELF SHOP 24H/24**  
UP TO 320 PRODUCTS



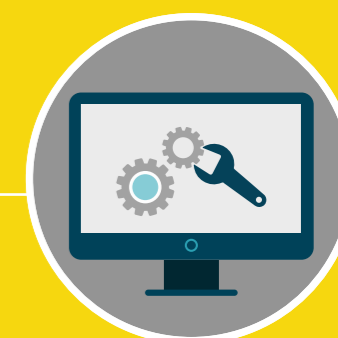
**SHOWCASE**

A large, well-lit showcase improves product visibility and generates outstanding sales.



**ARMoured PRODUCT PICK-UP NOZZLE**

New armoured nozzle for product pick-up



**SOFTWARE**

New software features with automatic detection of engine faults and product distribution errors. This feature makes the model absolutely complete.



**SLAVE 6 MODULE**

N°6 DRAWERS  
N°6 POSITION EACH DRAWERS  
TOT 36 SELECTIONS MAX  
WEIGHT: 220 KG  
DIMENSIONS:  
H 183 W 69,5 D 84,5 CM

**SLAVE 8 MODULE**

N°6 DRAWERS  
N°8 POSITION EACH DRAWERS  
TOT 48 SELECTIONS MAX  
WEIGHT: 260 KG  
DIMENSIONS:  
H 183 W 83 D 84,5 CM

**SLAVE 10 MODULE**

N°6 DRAWERS  
N°10 POSITION EACH DRAWERS  
TOT 60 SELECTIONS MAX  
WEIGHT: 290 KG  
DIMENSIONS:  
H 183 W 98 D 84,5 CM

Internal temperature: from 3 C° to 18 C° - Maximum power consumption: 600W - Power supply: 230 v / 50 Hz